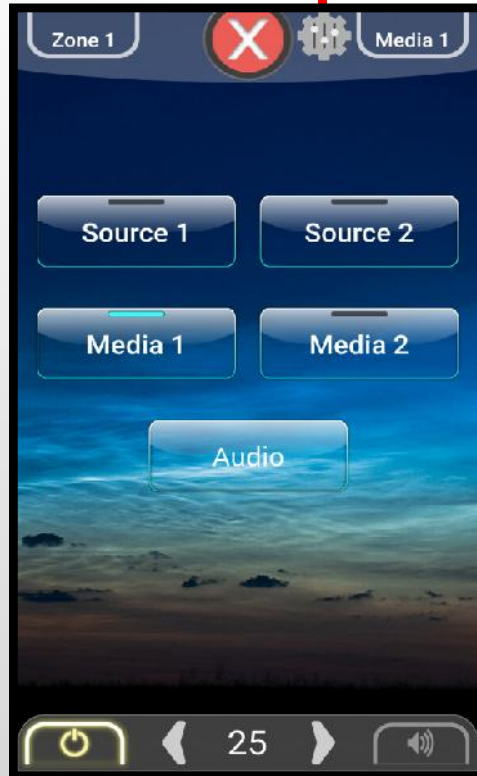


Mini 4 – Advanced Configuration Guide

iOS and Android Interface	2
Advanced Properties and Configuration	3
Advanced Properties and Configuration – Device Tab	4
Advanced Properties and Configuration – Zones Tab	5
Advanced Properties and Configuration – Sources Tab	6
Advanced Properties and Configuration – Media Tab	7
Advanced Properties and Configuration – IR Routing Tab	8
Advanced Properties and Configuration – Log Tab	9

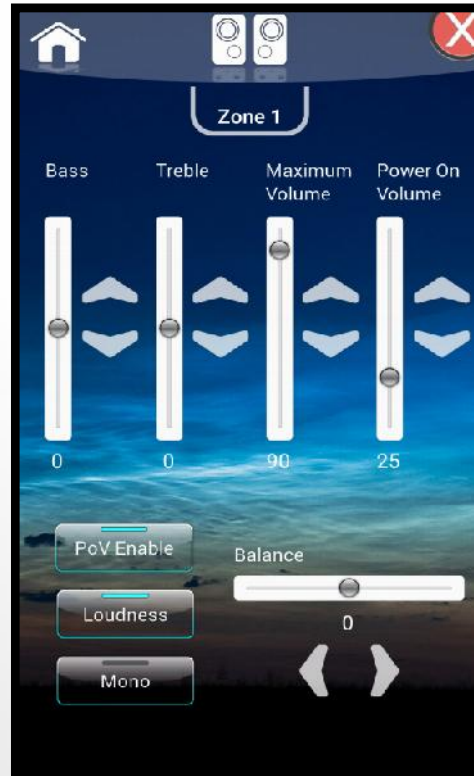


EQ Icon



Click the EQ icon to open the EQ page.

EQ Settings



From the EQ page you have access to balance, bass and treble. You can also set the max and power on volumes for the selected zone along with loudness and mono selection.



Long Press the speaker icon to access the advanced settings on the web page.

Unit properties



The properties page allows you to change zone and source names, view device information, set IP address and much more.



iOS will have a **Return To Axium** link here.
 For Android you can just use the devices **back** button.

Device tab:

Access the device and network information as well as date & time settings

Device

Zone settings:

Change zone names, reassign zone locations, assign keypads to zones, link zones and create groups

Zones

Sources:

Name sources, adjust source gain, set as independent and assign remote sources

Sources

Media tab:

Add media servers for NAS drives and streaming music from PCs on your network and shows "Favorites"

Media

IR routing:

Allows you to assign IR inputs and outputs

IR Routing

Log:

Diagnostic and event logging information

Log

192.168.1.16

Device Zones Sources Media IR Routing Log

Device Settings

Device Information

Model	AX-STR4
Unit ID	1161
Manufacture Date	1/6/2015
Firmware Version	2.3
Temperature	36°C (peak 36°C)
IP Address	192.168.1.16
MAC Address	10:07:23:40:01:F9

Wired Ethernet - 192.168.1.16

Network Name: STR4-1161
 Connection: Automatic Configuration (DHCP)
 KNX Interface: (Disabled)

Date and Time

Date: 08/02/2016, 13:27:07
 NTP Server: oceania.pool.ntp.org
 Observe DST:
 DST begins: First Sunday of October
 DST ends: First Sunday of April

Save Changes Undo Changes

© Copyright 2011-2016 Audio Engineering Ltd. All rights reserved.

Tip:

If you do not know the IP address you can discover the device using its NetBIOS name (PC Only) The NetBIOS name is printed on a sticker on the unit. E.G. STR4-1161





Device Information:

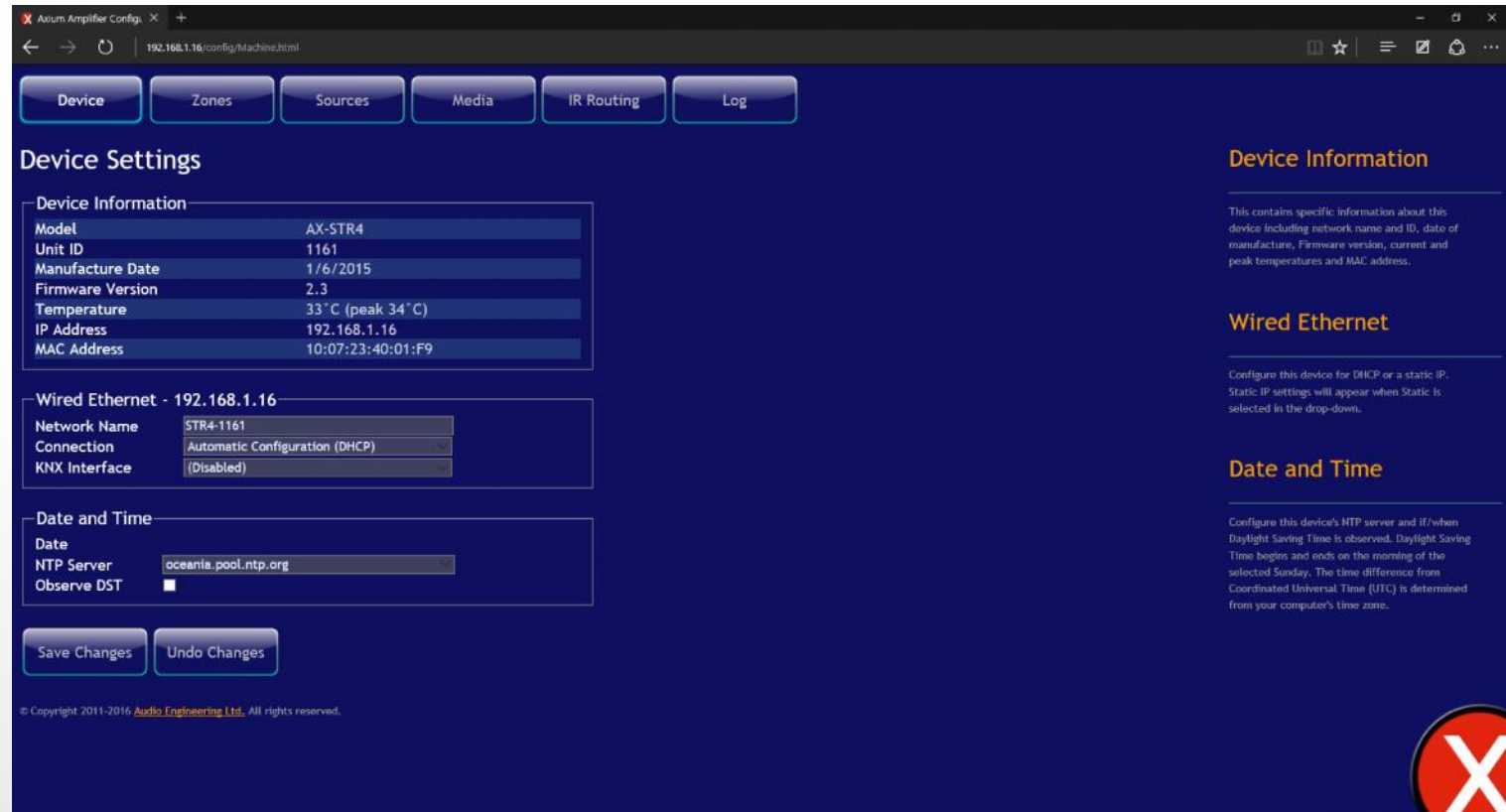
This contains specific information about this device including network name and ID, date of manufacture, Firmware version, current and peak temperatures and MAC address.

Wired Ethernet:

Configure this device for DHCP or a static IP. Static IP settings will appear when Static is selected in the drop-down.

Date and Time:

Configure this device's NTP server and if/when Daylight Saving Time is observed. Daylight Saving Time begins and ends on the morning of the selected Sunday. The time difference from Coordinated Universal Time (UTC) is determined from your computer's time zone.





Zone Settings:

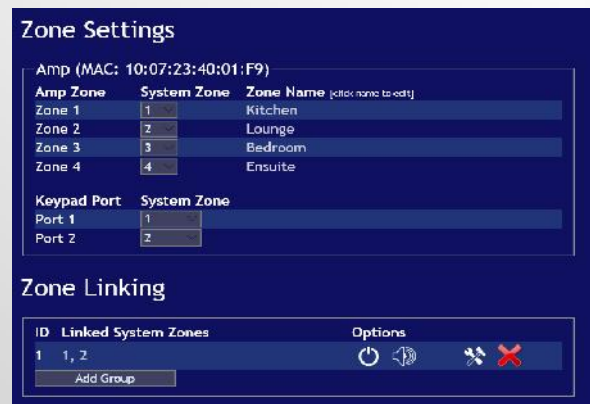
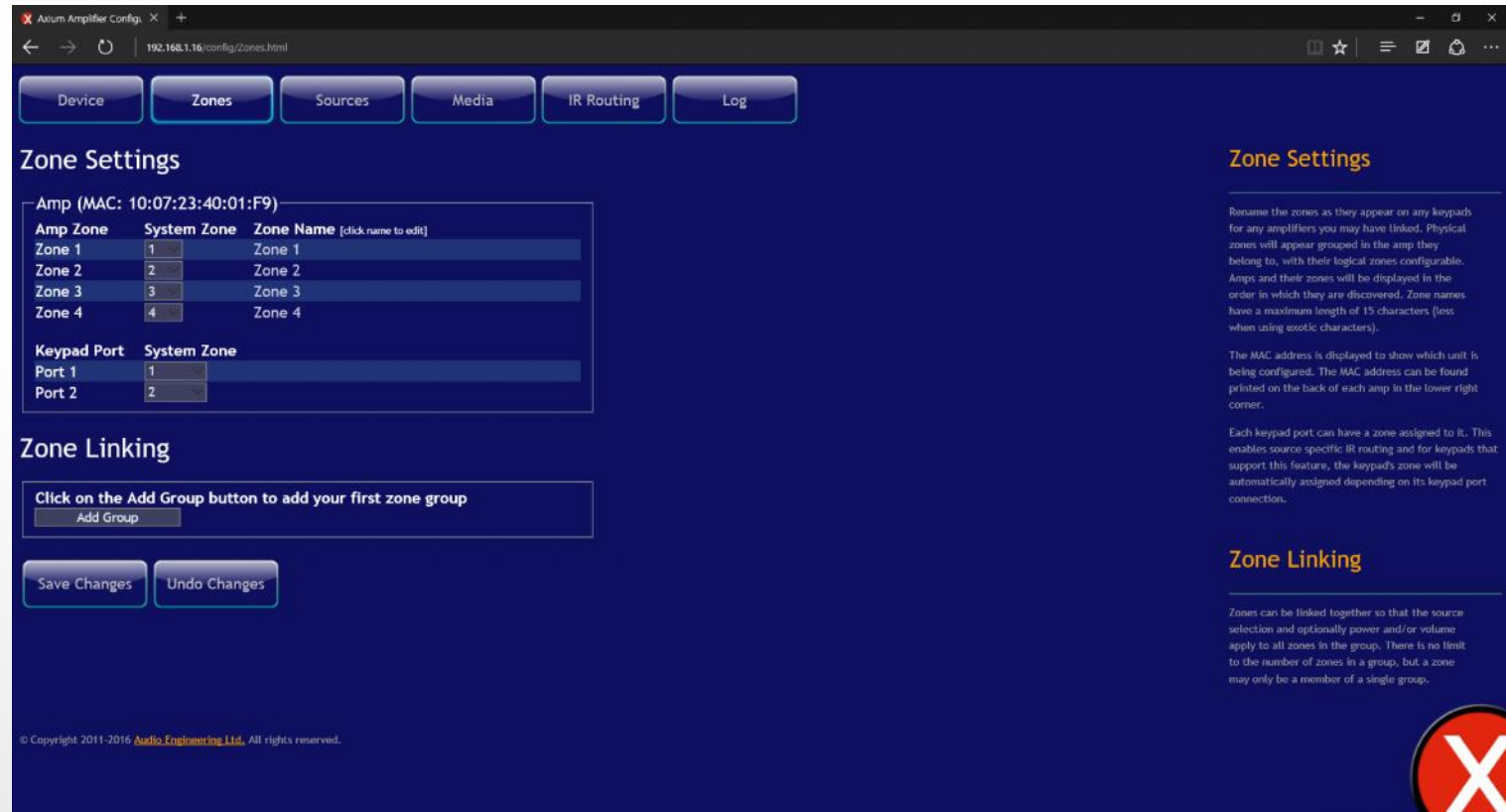
Rename the zones as they appear on any keypads for any amplifiers you may have linked. Physical zones will appear grouped in the amp they belong to, with their logical zones configurable. Amps and their zones will be displayed in the order in which they are discovered. Zone names have a maximum length of 15 characters (less when using exotic characters).

The MAC address is displayed to show which unit is being configured. The MAC address can be found printed on the back of each amp in the lower right corner.

Each keypad port can have a zone assigned to it. This enables source specific IR routing and for keypads that support this feature, the keypad's zone will be automatically assigned depending on its keypad port connection.

Zone Linking:

Zones can be linked together so that the source selection and optionally power and/or volume apply to all zones in the group. There is no limit to the number of zones in a group, but a zone may only be a member of a single group.





Source Settings:

This allows you to rename the audio sources on the amplifier as they appear on any keypads you may have. Source names have a maximum length of 15 characters (less when using exotic characters). The sources listed are those from the amp selected in the web browser.

The gain for individual sources can be adjusted for balancing them with other sources. Source gain changes occur live.

Remote Sources:

Remote sources are sources that are streamed from any device on the network. Up to 32 remote sources can be defined system wide.

Source Settings

Physical Sources

Physical Source	Source Name [click name to edit]	Independent	Source Gain
Source 1	S1	<input checked="" type="checkbox"/>	0dB
Source 2	S2	<input checked="" type="checkbox"/>	0dB
Media 1	Media 1	<input checked="" type="checkbox"/>	
Media 2	Media 2	<input checked="" type="checkbox"/>	

Remote Sources

Remote Source	Device	Source
1	(no device)	<input checked="" type="checkbox"/>
2	(no device)	<input checked="" type="checkbox"/>
3	(no device)	<input checked="" type="checkbox"/>
4	(no device)	<input checked="" type="checkbox"/>
5	(no device)	<input checked="" type="checkbox"/>
27	(no device)	<input checked="" type="checkbox"/>
28	(no device)	<input checked="" type="checkbox"/>
29	(no device)	<input checked="" type="checkbox"/>
30	(no device)	<input checked="" type="checkbox"/>
31	(no device)	<input checked="" type="checkbox"/>
32	(no device)	<input checked="" type="checkbox"/>

Save Changes Undo Changes

© Copyright 2011-2016 Audio Engineering Ltd. All rights reserved.

Source Settings

Physical Sources

Physical Source	Source Name [click name to edit]	Independent	Source Gain
Source 1	DAB Radio	<input checked="" type="checkbox"/>	0dB
Source 2	Pay TV	<input checked="" type="checkbox"/>	0dB
Media 1	Media 1	<input checked="" type="checkbox"/>	
Media 2	Media 2	<input checked="" type="checkbox"/>	

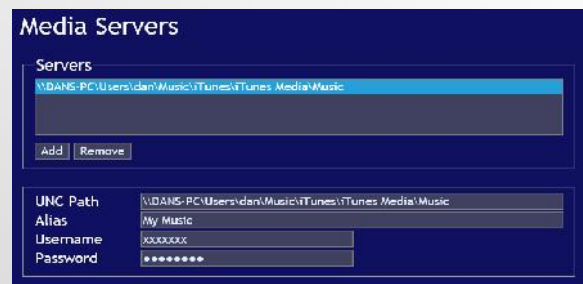
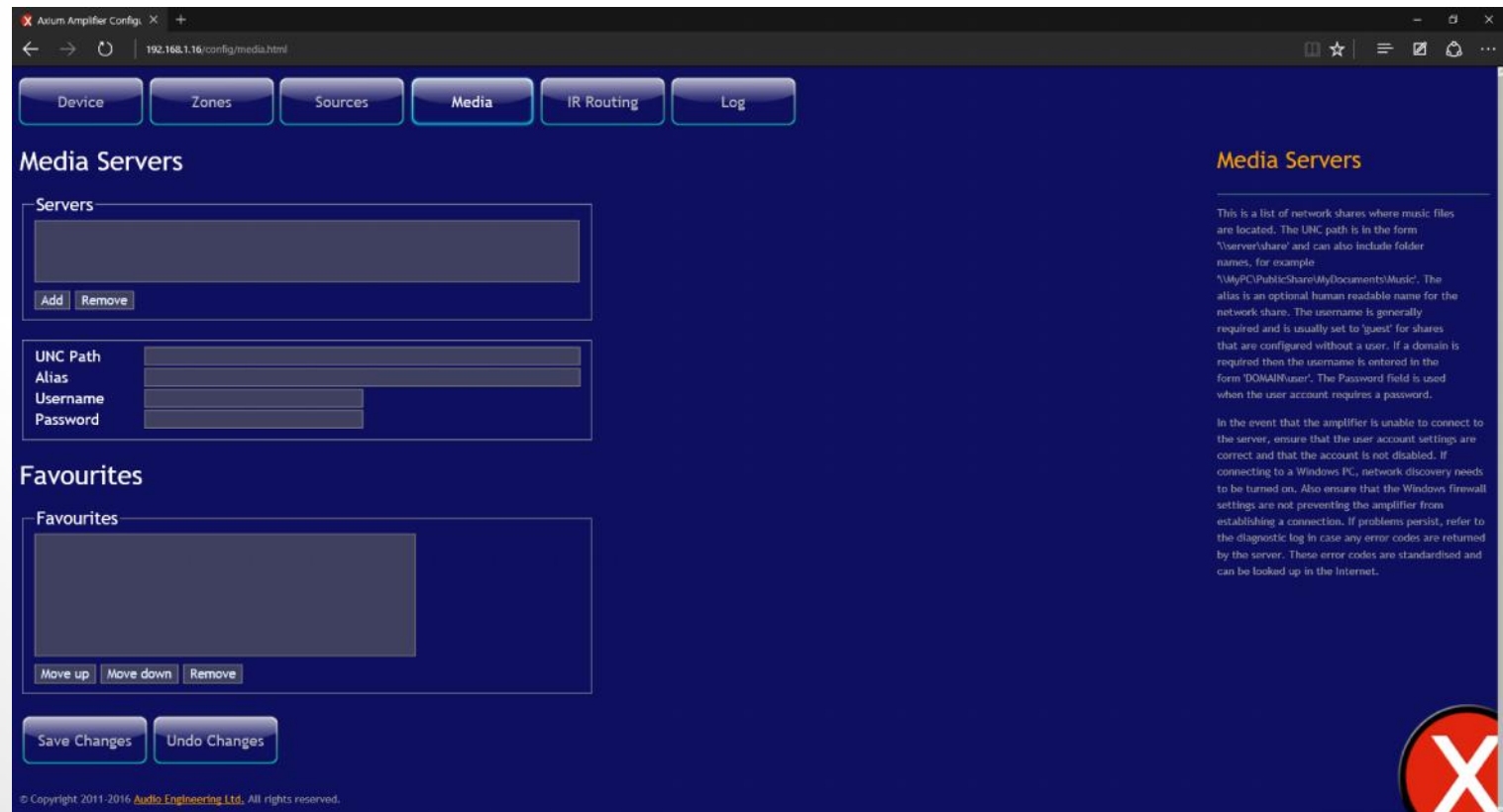




Media Servers:

This is a list of network shares where music files are located. The UNC path is in the form '\\server\share' and can also include folder names, for example \\MyPC\Share\MyDocuments\Music. The alias is an optional human readable name for the network share. The username is generally required and is usually set to 'guest' for shares that are configured without a user. If a domain is required then the username is entered in the form 'DOMAIN\user'. The Password field is used when the user account requires a password.

In the event that the amplifier is unable to connect to the server, ensure that the user account settings are correct and that the account is not disabled. If connecting to a Windows PC, network discovery needs to be turned on. Also ensure that the Windows firewall settings are not preventing the amplifier from establishing a connection. If problems persist, refer to the diagnostic log in case any error codes are returned by the server. These error codes are standardised and can be looked up in the Internet.

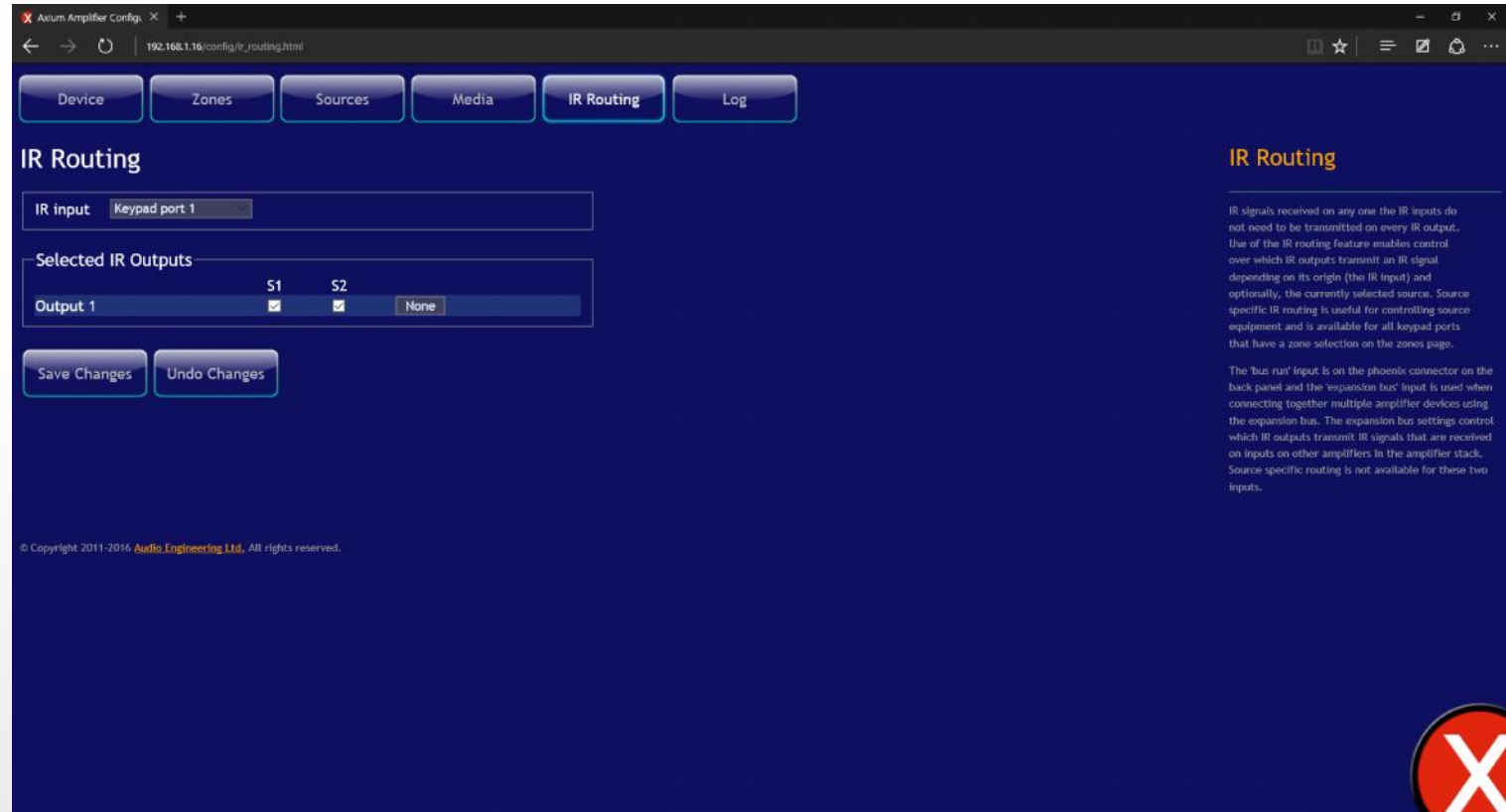


IR Routing

IR Routing:

IR signals received on any one the IR inputs do not need to be transmitted on every IR output. Use of the IR routing feature enables control over which IR outputs transmit an IR signal depending on its origin (the IR input) and optionally, the currently selected source. Source specific IR routing is useful for controlling source equipment and is available for all keypad ports that have a zone selection on the zones page.

The 'bus run' input is on the phoenix connector on the back panel and the 'expansion bus' input is used when connecting together multiple amplifier devices using the expansion bus. The expansion bus settings control which IR outputs transmit IR signals that are received on inputs on other amplifiers in the amplifier stack. Source specific routing is not available for these two inputs.





Diagnostics Log:

This log shows current or recent amplifier activity which can be useful for diagnosing some problems.

Events:

This shows events that have been stored in non-volatile memory.

