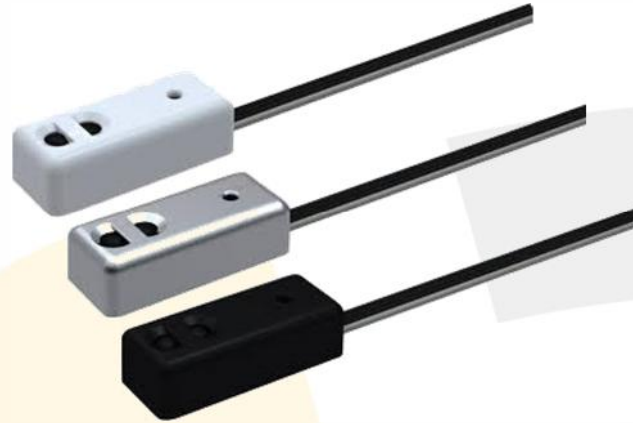


Simple to setup
Simple to use
Simply enjoy

Technical Specifications

- Excellent IR receiver range: 8m ± 45° (Depends on ambient light levels and remote-control strength)
- Receives / processes very short pulse burst codes systems as used by some set top box receivers
- Wide input voltage range: 8 - 16VDC 50mA
- Amplifier ON indicator and IR reception "flash back" indicator. (Both can be defeated)
- Default modulation frequency, : 38KHz ± 1%
- Multiple IRFX3 receivers may be connected in parallel
- High Strength Acrylic sticky mounts are used to attach the IRFX3
- The receiver has excellent off axis reception, giving >50% range when 45° off axis
- Flat 4 core 28AWG 2m black lead
- Ingenious Rear / Bottom cable exit
- Flat 4 core 28AWG 2m black lead on the IRFX3.
- Rear/ Bottom side cable exit
- Enhanced EMI immunity with Data Stream Filtering
 - Rejects IR disturbances that can slow down or cause intermittent problems on IR systems
- Fitted with RJ45 for easy connection via wall plates or direct to EX4-N
- Supplied with 3 shell colours
 - Black
 - White
 - Silver
- Dimensions:
 - Width 9.0mm
 - Length 22.0mm
 - Height 6.5mm
- Approvals: C-Tick CISPR22, FCC



Microprocessor filtered

The Smallest Data-Stream Filtered Infra-Red Receiver.

The IRFX3 is Plasma, LCD, LED & Sunlight tolerant, utilising leading edge technology to filter the received Infrared (IR) data packets.

A microprocessor filters then re-transmits the IR command in real time, with priority given to reconstruct fussy short pulse IR Commands used in some remote controls.

Superior IR throughput

Superior performance in rejecting noise and interference using a dual lens receiver system which incorporates a High-Q optical filter removing the problematic LCD/Plasma frequencies. In addition, an EMI shield has been Integrated to provide even greater compatibility and more mounting options.

Flexible mounting

With its slim profile, colour options and exceptional cable control the IRFX3 is suitable for surface mounting on Televisions, Plasma/LED/LCD displays, cabinets, appliances, or speaker grills, it blends completely into the device you attach it to.

Pinout

Wire	Function
Black	0V
Black	IR Output
Black	+12V DC
Grey	Amp On



Specifications and features subject to change without notice. Please check www.axiumcontrol.com for latest updates